
Erosion and Sediment Control

Workshop 1: Fundamentals of Erosion and Sediment Control

Workshop 1 focuses on urban subdivisions and covers topics including the theory of soil conservation, erosion and sediment control products and practices, restoration ecology and revegetation. These topics are introduced in a manner consistent with the best practice, erosion control driven, 50 mg/L wet weather release limit approach of the *Manual for Erosion and Sediment Control*, the "*Maroon Manual*", which has been developed and adopted by Sunshine Coast Regional Council.

The workshop provides training in the selection, construction and maintenance of temporary and permanent erosion and sediment control measures on construction sites. It provides a background in soils and vegetation for those who wish to expand their knowledge of these topics from a practical perspective rather than detailed design.

This workshop does not address engineering considerations, mathematical calculations or preparing plans for erosion and sediment control, but covers the role of onsite construction workers and serves as an introduction to the later Workshops 2, 3 and 4.

Workshop content:

- Water Quality, Planning and Legal Requirements
- Soils and Soil Conservation
- Erosion Hazard Factors and their Control
- Implementing Effective Erosion and Sediment Control Best Management Practices
- Erosion and Sediment Control Products

Workshop 2: What's in the Maroon Manual

Workshop 2 gives a broad overview of the material contained in the "*Maroon Manual*". Workshop participants require a calculator and access to a copy of the "*Maroon Manual*".

This workshop provides an understanding of the key technical and management issues relating to erosion and sediment control in the urban environment in SE Queensland. It also introduces the Revised Universal Soil Loss Equation as a tool for assessing erosion risk at a site under different management conditions. The workshop is designed to guide participants through the "*Maroon Manual*" so they can apply it to their plans and sites. We look at what site issues should be considered when planning for erosion and sediment control and how they might affect your proposed works.

Workshop content:

- Site Assessment and Site Planning
- Erosion Control
- Sediment Control
- Site Management and Inspection

Workshop 3: Water Management on Construction Sites

Workshop 3 trains those responsible for the selection, design or review of temporary and permanent erosion and sediment control measures on urban construction sites.

This Workshop focuses on sediment basins and diversion structures, two key features of a major Erosion and Sediment Control Plan. This workshop is equally applicable to both engineers and non-engineers. Participants will gain a sound understanding of the design aspects of water management structures described in the "*Maroon Manual*".

Workshop 3 participants require access to a copy of the "*Maroon Manual*", a calculator, notebook and pen, and if possible, have access to a laptop computer. A software CD and electronic copy of the "*Maroon Manual*" will be provided.

Workshop content:

- Theory of Water Management
- Application of Water Management on Construction Sites
- Sizing and Designing Sediment Basins
- Designing Catch Drains and Diversion Structures

Workshop 4: Preparing and Reviewing Plans for Soil and Water Management

Workshop 4 trains personnel responsible for the identification and design of temporary and permanent erosion and sediment control measures on construction sites and for their delineation on a plan. Workshop 4 pulls together the information presented at Workshops 1, 2 and 3. It is a practical application of the work undertaken at the earlier workshops. The workshop also trains regulators in the necessary skills for review of Soil and Water Management Plans / Erosion and Sediment Control Plans.

Participants will gain a sound understanding of the process involved with the selection, design and placement of a range

of typical erosion and sediment control measures suitable for use on construction sites. They will be able to delineate these on an Erosion and Sediment Control Plan following the criteria set out in the "*Maroon Manual*". In addition they will be able to review such plans. Participants should bring a copy of the most recent edition of the "*Maroon Manual*", a calculator, notebook and pen, and a laptop computer loaded with the software provided at Workshop 3.

Workshop content:

- Theory of Plan Preparation
- Guided Practice in the preparation of minor and major Erosion and Sediment Control Plans
- Plan Preparation Using Local Examples
- Reviewing SWMPs and ESCPs

The "Maroon Manual"

The "*Maroon Manual*" can be downloaded in advance at: http://www.maroochy.qld.gov.au/environment/sitePage.cfm?ode>manual_sediment_erosion

Who should attend these workshops?

- Site construction personnel
- Developers and Consultants
- Civil and Environmental Engineers
- Local and State Government Officers
- Those responsible for reviewing Erosion and Sediment Control and Soil and Water Management Plans
- Others wishing to update their knowledge in line with the current best practice approaches in the "*Maroon Manual*"
- Those who wish to be prepared for the International Erosion Control Association's examination for **Certified Professional in Erosion and Sediment Control (CPESC)**.

Arrangements for sitting the CPESC examination can be made with IECA (Australasia).

Erosion and Sediment Control

Expression of Interest

Please place my name on the mailing list for information on future courses:

Name

Organisation

Address

Postcode

Tel

Fax

e-mail

Courses generally run from 8.30am to 4.30pm.

Course fee includes comprehensive course notes, software as indicated and lunches and morning and afternoon teas.

Participants should bring required materials as noted.

Limited places are available. Reservation deadline is one week prior to any workshop.

Places are reserved on receipt of payment.

Please call for details of upcoming dates and venues.

The Centre for Environmental Training
197 Main Road
CARDIFF NSW 2285 AUSTRALIA
Telephone: 02 4954 4997
Facsimile: 02 4954 4996
e-mail: mail@environmentaltraining.com.au

Erosion and Sediment Control Workshops

- Workshop 1: Fundamentals of Erosion and Sediment Control
- Workshop 2: What's in the "Maroon Manual"?
- Workshop 3: Water Management on Construction Sites
- Workshop 4: Preparing and Reviewing Plans for Soil and Water Management

These workshops are based on the *Manual for Erosion and Sediment Control*, the "*Maroon Manual*". They have been prepared by the team responsible for developing that text and are offered separately or together as a comprehensive program.

Together, the workshops cover the theory required for the International Erosion Control Association (IECA) examination for **Certified Professional in Erosion and Sediment Control (CPESC)**. Examination candidates need to know both the theory and its application in a practical context. Arrangements for sitting the CPESC examination can be made with IECA (Australasia).

The IECA has endorsed these workshops.

These workshops are also available for in-house delivery. Please call the Centre for Environmental Training on 02 4954 4997 to discuss your requirements.

Additional Half-day Workshops

For those working in specific industry sectors we offer a number of additional half-day workshops on Erosion and Sediment Control for specific applications:

- Services
- Waste Landfills
- Unsealed Roads
- Main Road Construction
- Mines and Quarries

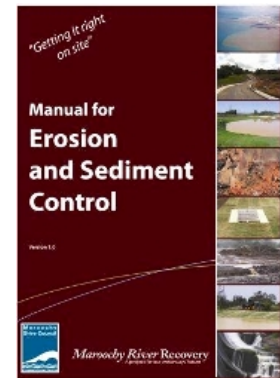
Please call the Centre for Environmental Training on 02 4954 4997 for further information.

Four 1-day professional development workshops for practitioners in

Erosion and Sediment Control

Leading to Certified Professional in Erosion and Sediment Control (CPESC) qualification

Courses offered throughout Queensland



Prepared by Rick Morse and Andrew Macleod



together with

cet

Centre for Environmental Training
