

# Best Practice Erosion and Sediment Control

– the essential reference for building and construction site erosion and sediment control for Australia

## Book 1: Chapters (hardcopy, 260 pages)

1. Introduction, 2. Principles of erosion and sediment control,
3. Site planning, 4. Design standards and technique selection,
5. Preparation of plans, 6. Site management, 7. Site inspection,
8. Bibliography

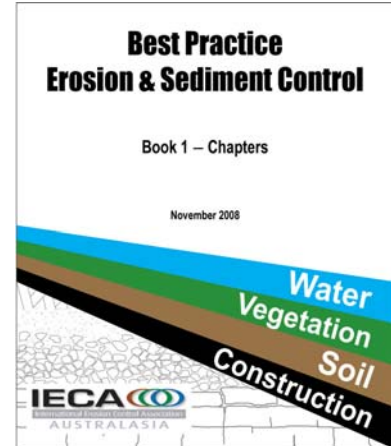
## Book 2: Appendices A–G (hardcopy, 250 pages)

A. Construction site hydrology and hydraulics, B. Sediment basin design and operation, C. Soils and revegetation, D. Example plans, E. Soil loss estimation, F. Erosion hazard assessment, G. Model code of practice

## Book 3: Appendices H–N (hardcopy, 200 pages)

H. Building sites, I. Instream works, J. Road and rail construction, K. Access tracks and trails, L. Installation of services, M. Erosion processes, N. Glossary of terms

(Prepared by Grant Witheridge of Catchments & Creeks Pty Ltd)



## Features of Books 1, 2 & 3 include:

- ❖ Clearly defined principles of erosion and sediment control.
- ❖ Guidelines on soil sampling, sample density, and testing requirements.
- ❖ Site planning checklist.
- ❖ Recommended drainage control standard, erosion control standard, and sediment control standard.
- ❖ Rainfall and monthly erosivity values for prominent towns and cities across Australia.
- ❖ Guidelines on the selection of temporary drainage, erosion and sediment control measures.
- ❖ 24-step procedure for the development of Erosion and Sediment Control Plans.
- ❖ 108 example technical notes for use within Erosion and Sediment Control Plans.
- ❖ Detailed checklist for assessing Erosion and Sediment Control Plans.
- ❖ Example “weekly” and “detailed” site inspection checklists.
- ❖ Two methods for assessing the potential erosion hazard of a work site.
- ❖ Four model codes of practice: general construction, building sites, instream works, and installation of services.
- ❖ 250 example *Development Approval Conditions*, for use in the management of land-disturbing activities.
- ❖ Best practice procedures for the performance of instream construction and maintenance activities.

Books 1, 2 & 3 (set) are available through: IECA Australasia A.B.N. 40 390 817 321  
PO Box 33, PICTON, NSW, 2571, Australia  
(02) 4677 0901 Fax (02) 4677 0902  
Email: [admin@austieca.com.au](mailto:admin@austieca.com.au)

Please fax email or post the following order form to IECA Australasia.

# Best Practice Erosion and Sediment Control

## Order Form

NAME .....

COMPANY .....

POSTAL ADDRESS .....

.....

..... Post Code .....

Phone : .....

Contact e-mail : .....

*(We would appreciate your e-mail address so that we can forward correspondence to you electronically in future)*

### Sales within Australia

This payment is for ..... sets (Books 1, 2 & 3)  
IECA Members at \$330.00 (incl. GST) per set \$ \_\_\_\_\_  
Non Members at \$370.00 (incl GST) per set \$ \_\_\_\_\_  
Plus postage and handling of \$18.00 per set within Australia \$ \_\_\_\_\_

### Sales outside Australia

This payment is for ..... sets (Books 1, 2 & 3)  
IECA Members at \$300.00 per set \$ \_\_\_\_\_  
Non Members at \$330.00 per set \$ \_\_\_\_\_  
Plus postage and handling – please contact the IECA Australasia office. \$ \_\_\_\_\_

TOTAL \$ \_\_\_\_\_

**Please make cheques payable to:** International Erosion Control Association (Australasia)

**All Payments must be made in Australian dollars**

Enquiries phone Sandra Lanz on (02) 4677 0901, Fax (02) 4677 0902, or e-mail at: [admin@austieca.com.au](mailto:admin@austieca.com.au)

I am paying by:  Cheque,  Money order,  Mastercard,  Visa,  EFT

--	--	--	--

--	--	--	--

--	--	--	--

--	--	--	--

Valid until: ...../ 20.....

NAME ON CARD: .....

As appears on credit card

SIGNATURE .....

### EFT payment details:

Bank: CBA Branch: Camden BSB: 062 516 A/C: 10032321

In deposit description please put the code BP plus your name or company name.

Please send remittance advice to [admin@austieca.com.au](mailto:admin@austieca.com.au)